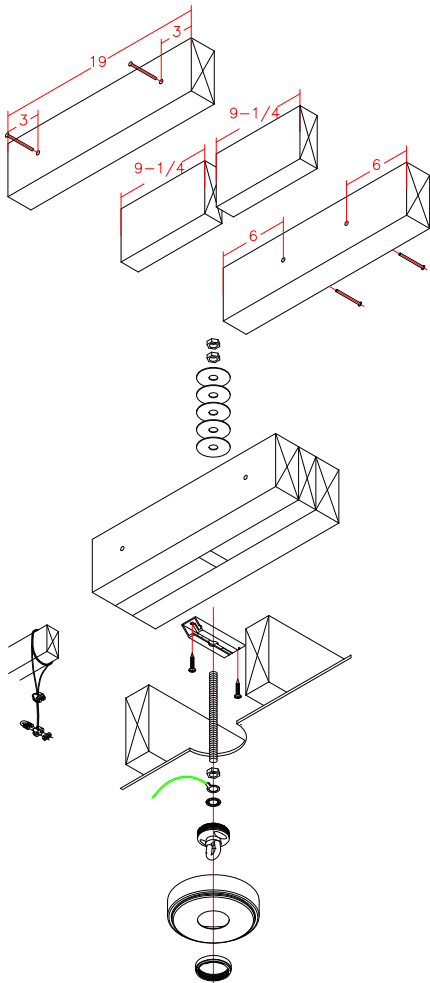
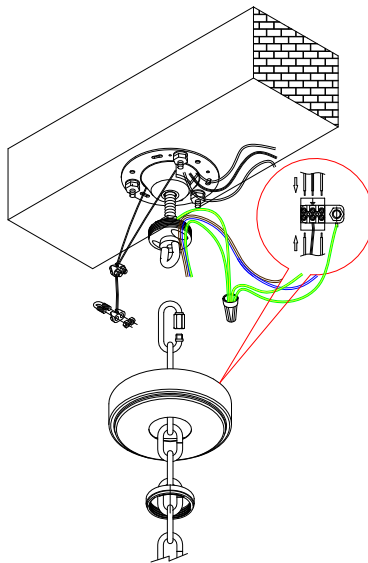
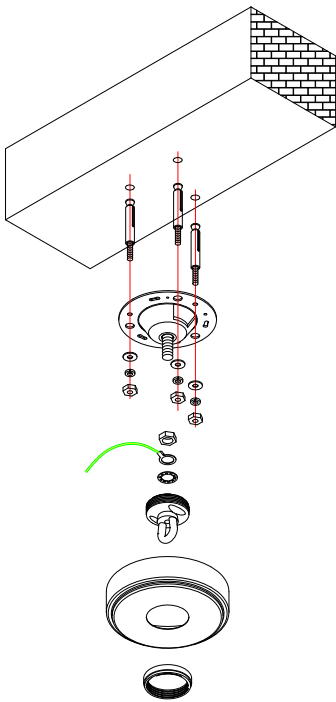
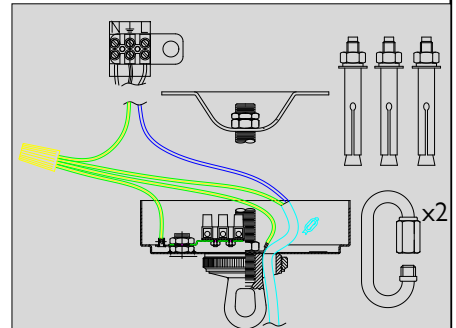
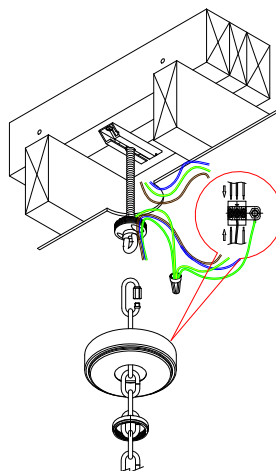




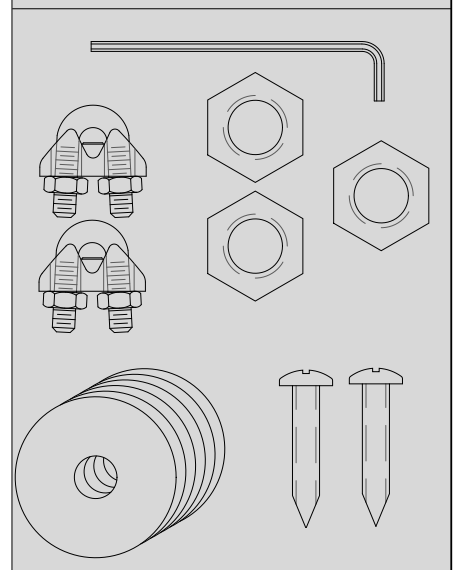
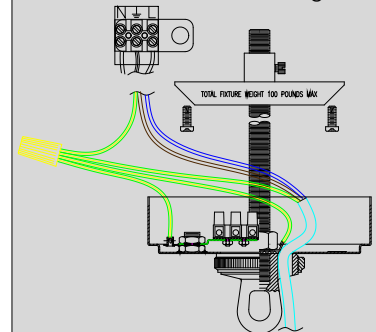
**Please install the fixture onto a sufficiently strong, load bearing surface.**



**Alternate ceiling installation.  
(For vaulted/wooden ceilings)**



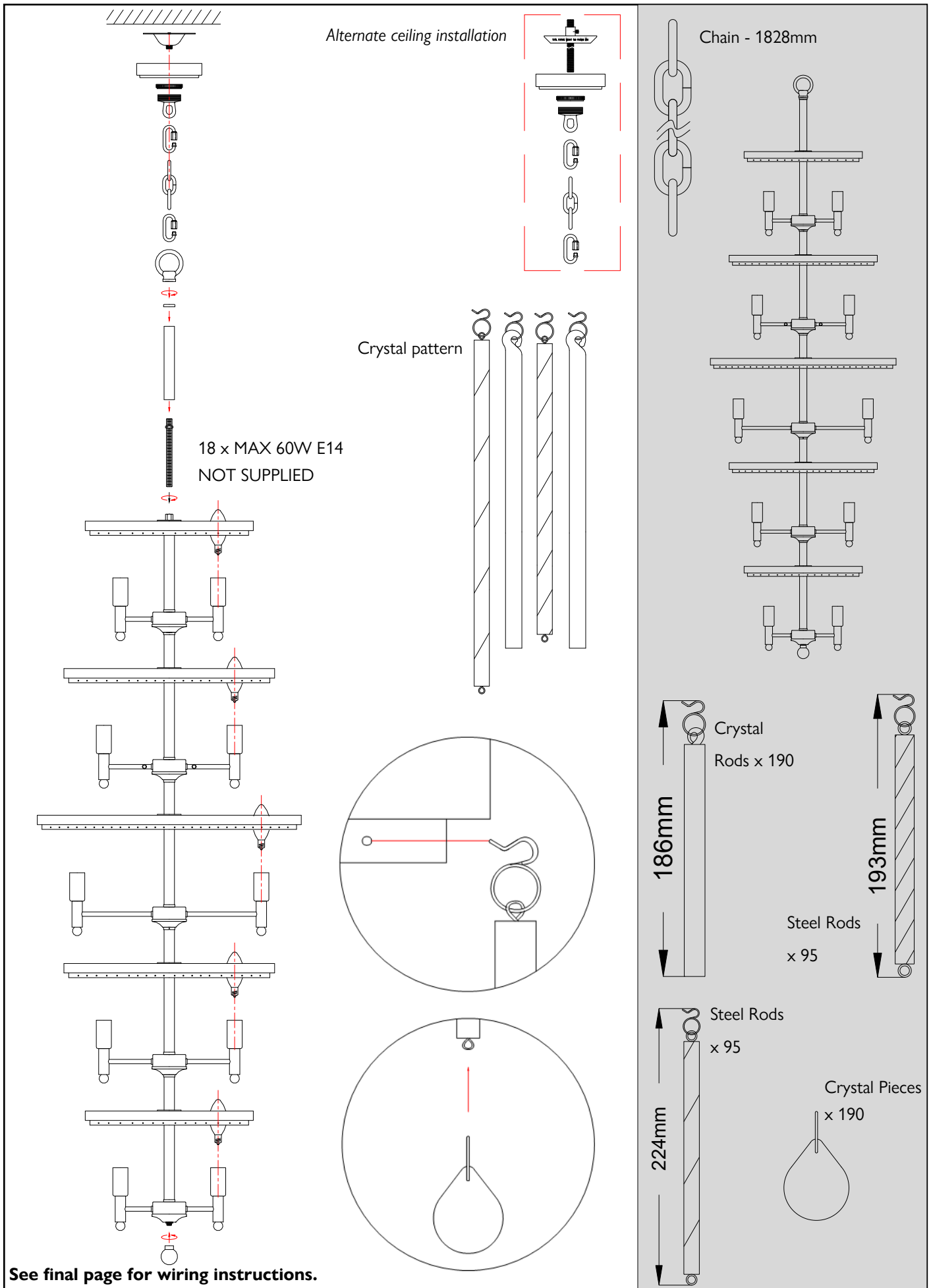
**Alternate ceiling installation.**



Help line +44 1420 82377

IT IS RECOMMENDED THAT LIGHTS ARE INSTALLED BY A QUALIFIED ELECTRICIAN

DR-0717



Help line +44 1420 82377

IT IS RECOMMENDED THAT LIGHTS ARE INSTALLED BY A QUALIFIED ELECTRICIAN