



# Energy Savior



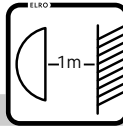
1



2



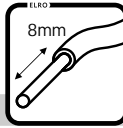
7



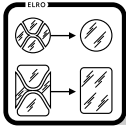
10



25



26



28



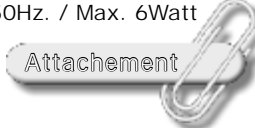
35



[WWW.ELRO.EU](http://WWW.ELRO.EU)  
 Roos Electronics bv,  
 Postbus 117, 5126 ZJ Gilze, Holland  
[WWW.ELRO-NL.COM](http://WWW.ELRO-NL.COM) - [WWW.ELRO-BE.COM](http://WWW.ELRO-BE.COM)  
 Roos Electronics GmbH Arnsberg-Germany  
[WWW.ROOSELECTRONICS.DE](http://WWW.ROOSELECTRONICS.DE)  
 EDEN, Vallauris, France [WWW.EDEN.FR](http://WWW.EDEN.FR)  
 C H Byron Corporation, Bromsgrove, U.K.  
[WWW.CHEYRON.COM](http://WWW.CHEYRON.COM)



220-240V~50Hz. / Max. 6Watt



for SAFETY INSTRUCTIONS!



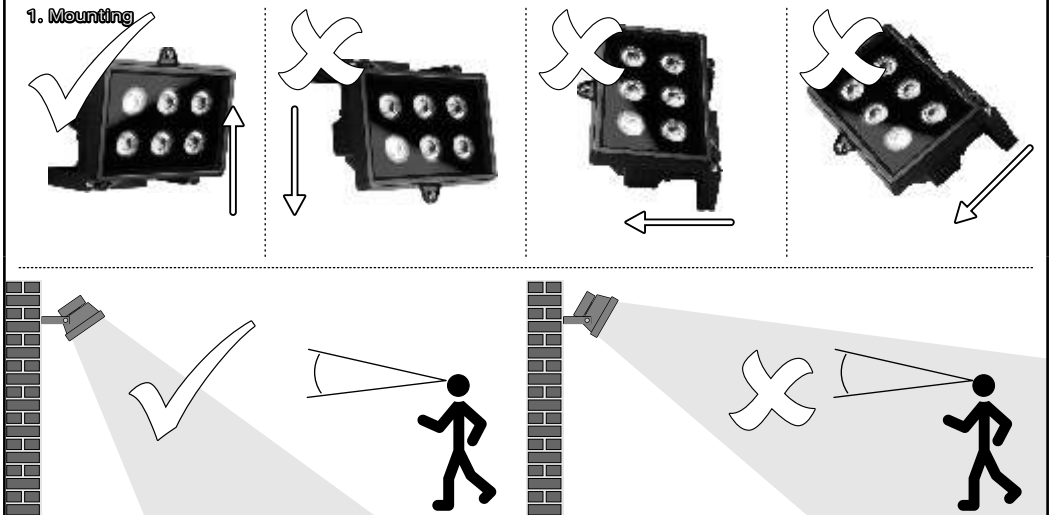
Energy <sup>id</sup>	
A	◀ A
B	
C	
D	
E	
F	
G	
430	Lumen
6	Watt
30000	h

HL6

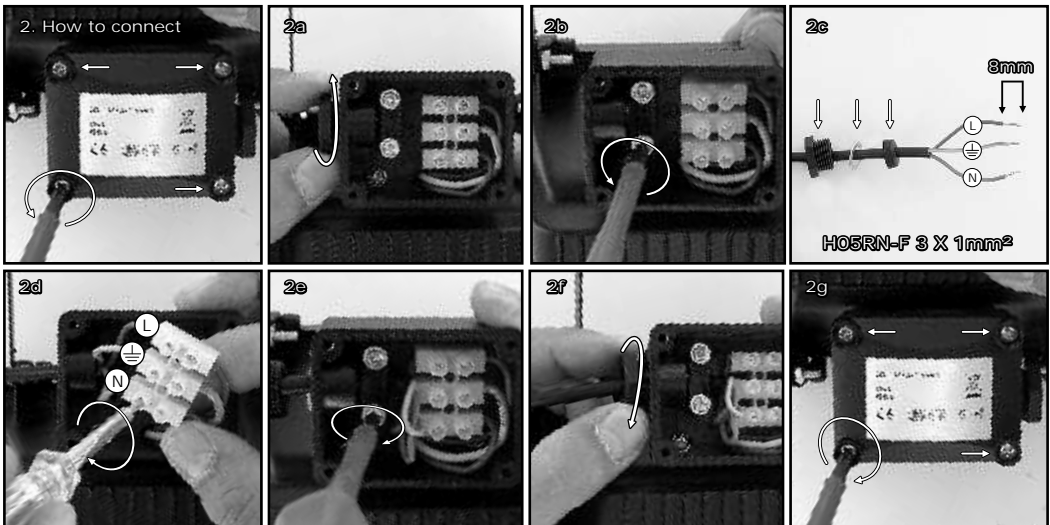


# Energy Savior

## 1. Mounting



## 2. How to connect



## 3. Overview

